



University of Washington College of Engineering

2021 STATE LEGISLATIVE AGENDA

RIISING TO OUR GREATEST CHALLENGES AND DRIVING ECONOMIC RECOVERY

In these unprecedented times, we need innovative problem solvers who can meet our greatest challenges. Training the next more diverse generation of engineers will benefit society, improve our communities' health, and supply industry with the talent to drive economic recovery. The UW's College of Engineering has the reach, talent and motivation to positively affect all of these challenges.

Producing more engineers

Thanks to state investments over the past ten years, the College of Engineering has nearly doubled degree output and increased access to underserved Washington students. With HB 2158's passage last biennium, the state funded engineering expansion to:

- Support 10% more students over the next five years;
- Increase participation of Washington underrepresented students in engineering through the highly impactful STARS program; and
- Provided capital funds to design the Interdisciplinary Engineering Building.

Capital Request: \$45.4 million to construct the Interdisciplinary Engineering Building

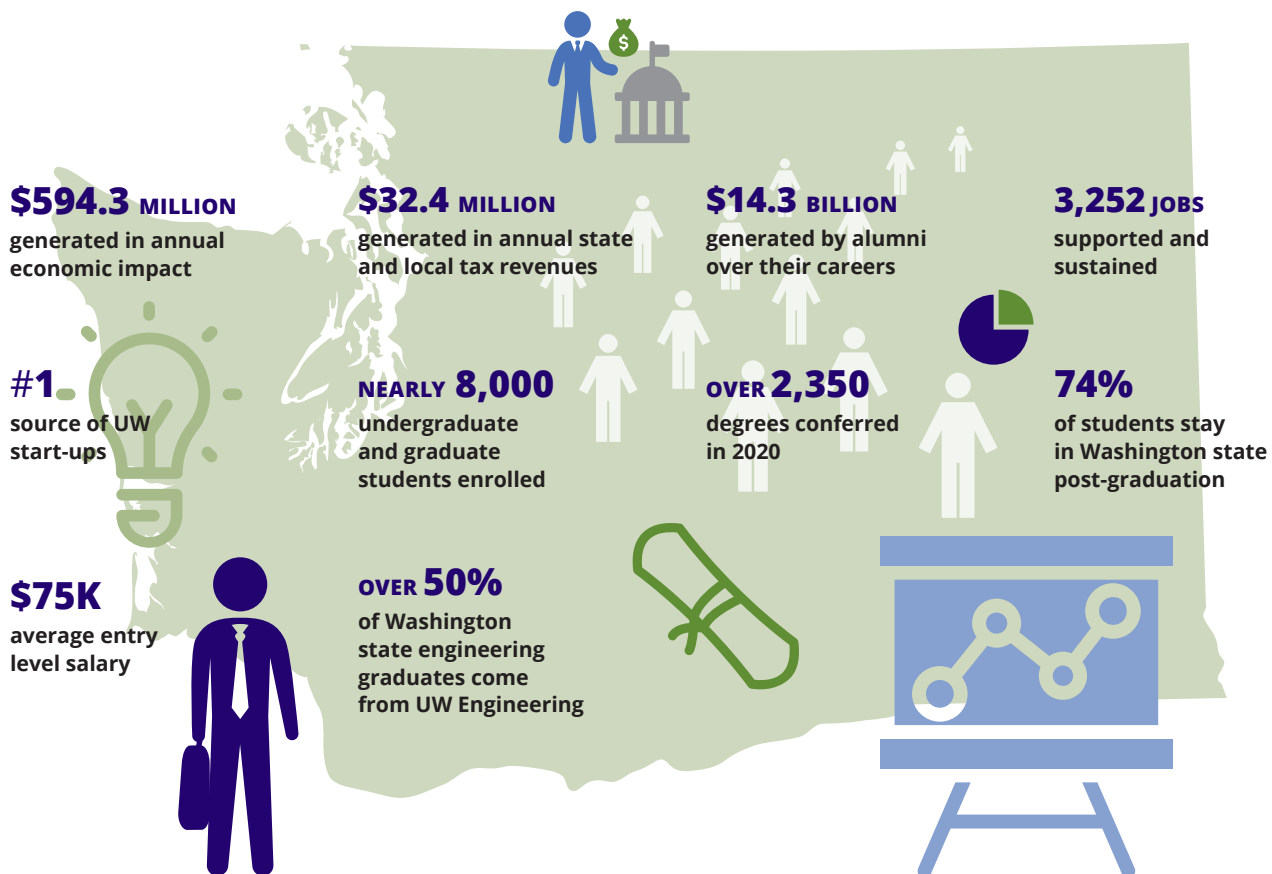
Building on previous investments, the UW requests \$45.4 million to construct the Interdisciplinary Engineering Building (IEB). This building is a key component of our overall growth and facilities plan and is necessary to accommodate the previously funded student enrollment growth.

The IEB will provide much needed interdisciplinary space for project-based collaborative learning, as well as a student-focused home for engineering undergraduates. UW Engineering has nearly doubled in size in the last 10 years, with only an 18 percent increase in square footage. This state investment will provide dedicated space to prepare more students to both succeed in an increasingly collaborative engineering field and address the world's most pressing challenges.

2021 STATE LEGISLATIVE AGENDA

INVESTMENT IN UW ENGINEERING IS AN INVESTMENT IN WASHINGTON STUDENTS, INDUSTRIES AND OUR ECONOMY

The UW College of Engineering's economic impact on the state of Washington exceeds \$594 million annually. Investment in engineering—degrees and research—is directly linked to overall economic health. For every dollar of state appropriation invested in the College, an additional six dollars are generated in the economy. From our top-flight engineers to our innovative discoveries and inventions, we are contributing to Washington's economic strength and vitality.



“ The College of Engineering's distinctive strengths in education, innovation, research and entrepreneurship make it a powerful engine of opportunity. We are proud to contribute to our state's communities by advancing engineering education and solutions that deepen our social and economic impact for Washington. We are committed to providing students with the education, training and skills they need to have fulfilling and impactful careers.”

NANCY ALLBRITTON, PHD, MD

Frank & Julie Jungers Dean of Engineering

