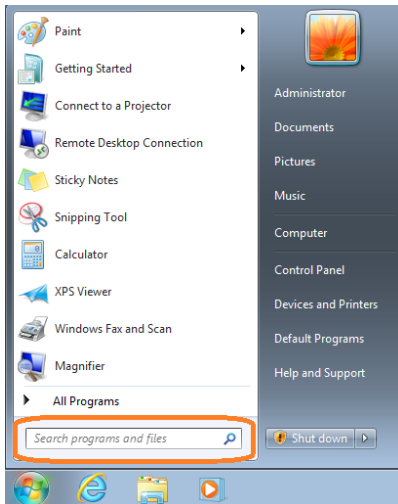


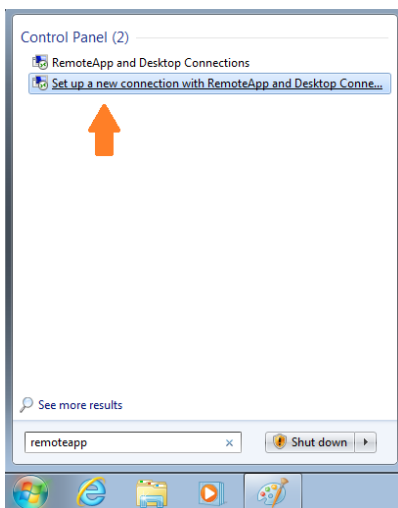
Configuring your Windows 7 or 8 Computer for RemoteApp

To configure your Windows 7 Computer to connect to RemoteApp, please follow the instructions below:

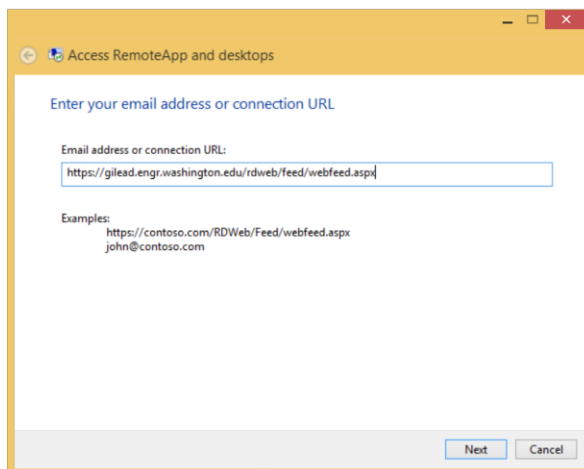
1. Click Start, then click in the search bar as shown:



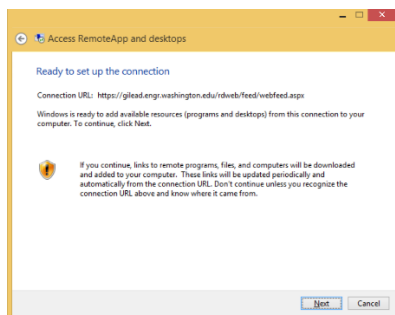
2. In the Search bar, type "RemoteApp", then click on "Set up a new connection with RemoteApp and Desktop Connections" as shown.



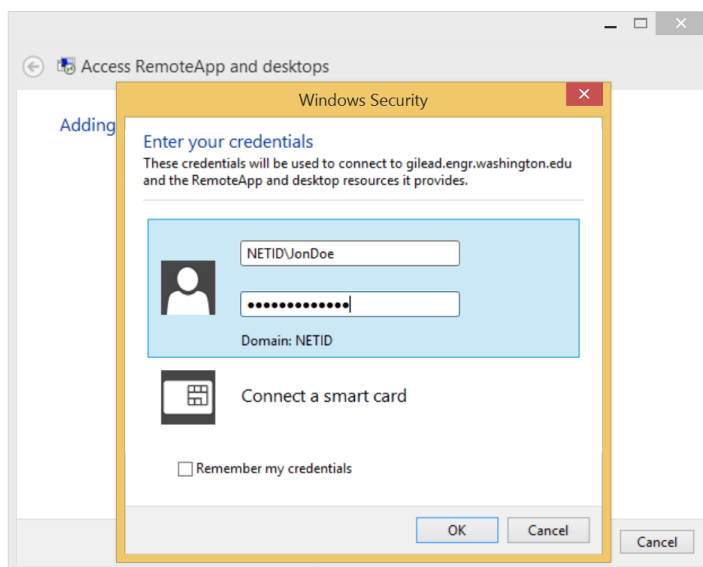
3. In the Connection URL: window, enter the following, then click next:
<https://gilead.engr.washington.edu/rdweb/feed/webfeed.aspx>



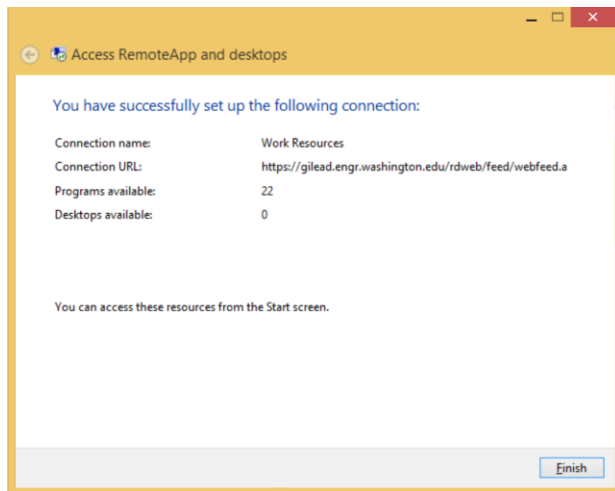
4. You will receive a dialog confirming readiness to proceed, like the one below. Click next as shown:



5. Next you'll be prompted for a username and password. Use your UW NetID username and password as shown:

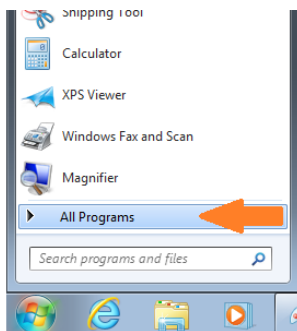


6. After successful authentication, you will receive a success dialog as shown:

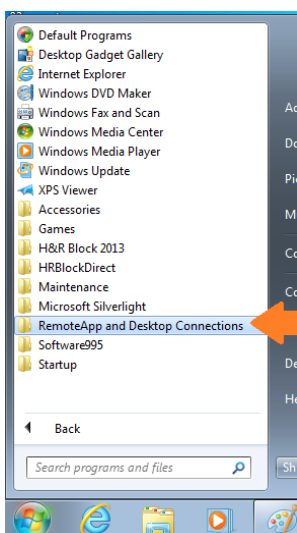


Click Finish.

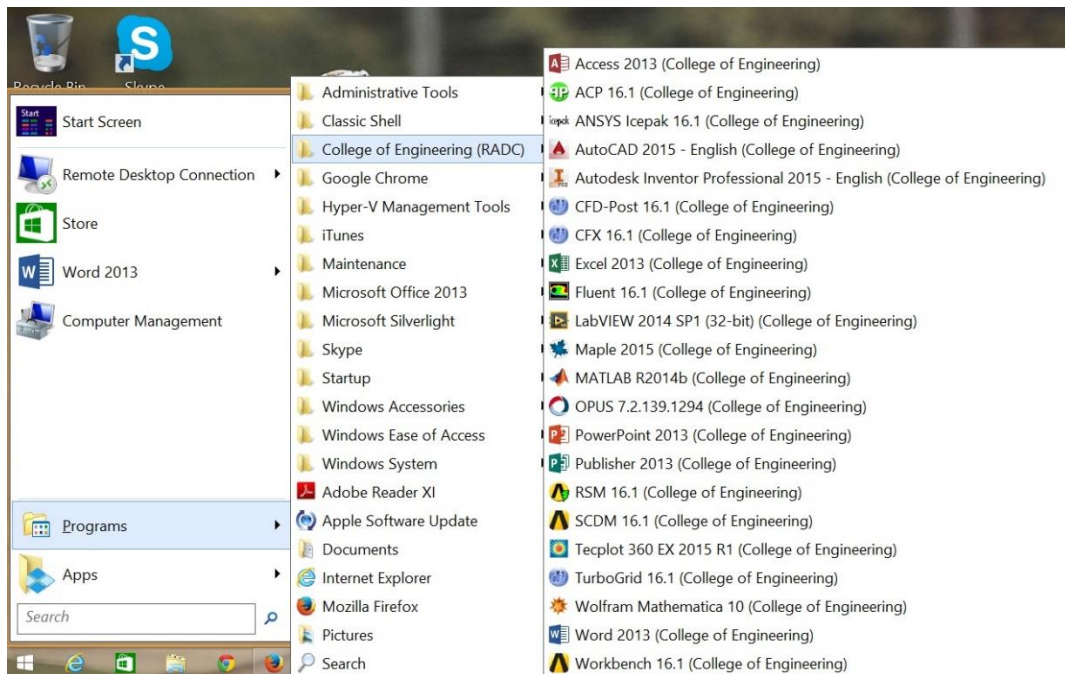
7. Then, click start, then All Programs:



8. Select "RemoteApp and Desktop Connections" from the All Programs menu as shown:

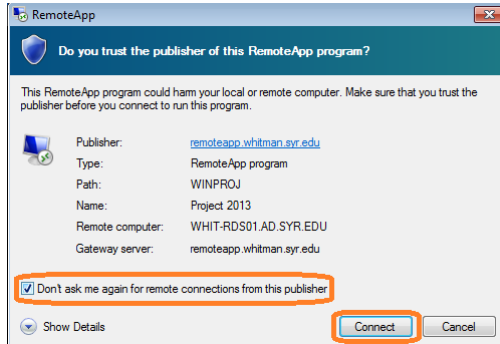


9. You will see a list of all the software packages available.

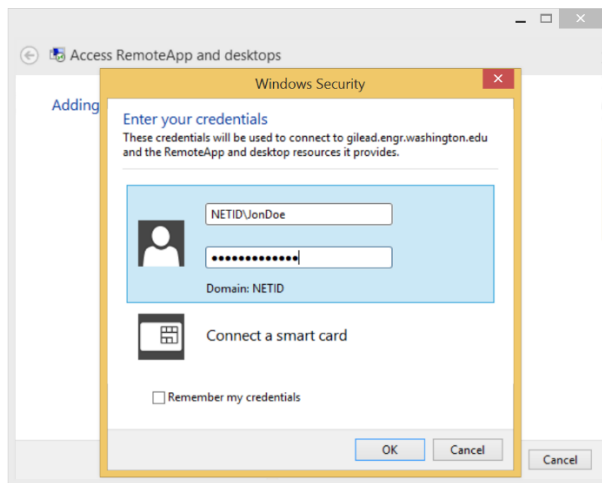


You can click on one to run it.

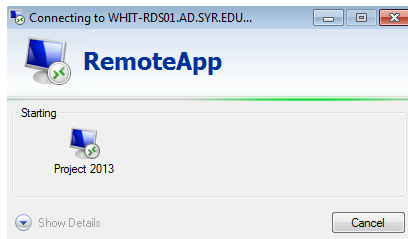
10. You will see a warning dialog asking you to verify that you trust the publisher of the RemoteApp program you're trying to run. Check the box for "Don't Ask Again" as indicated, and click Connect:



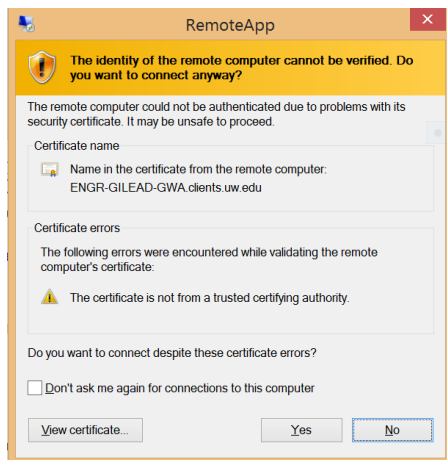
11. When asked for your username and password, use the same information you used in step 5 above:



12. You'll see a "Connecting to" dialog like the one below:



13. You will see a warning stating that "The identity of the remote computer cannot be verified. Do you want to connect anyway?" Click "Don't ask me again for connections to this computer" as indicated below, then click "Yes":



14. Your application will now run. If you encounter any issues, please send an email to help@engr.washington.edu.