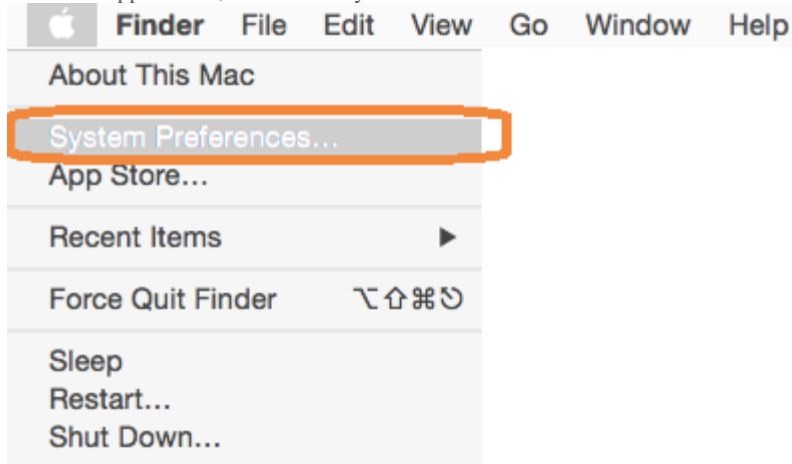


Configuring your Mac Computer for RemoteApp

To configure your Mac with OSX 10.7 or higher to connect to RemoteApp, please follow the instructions below:

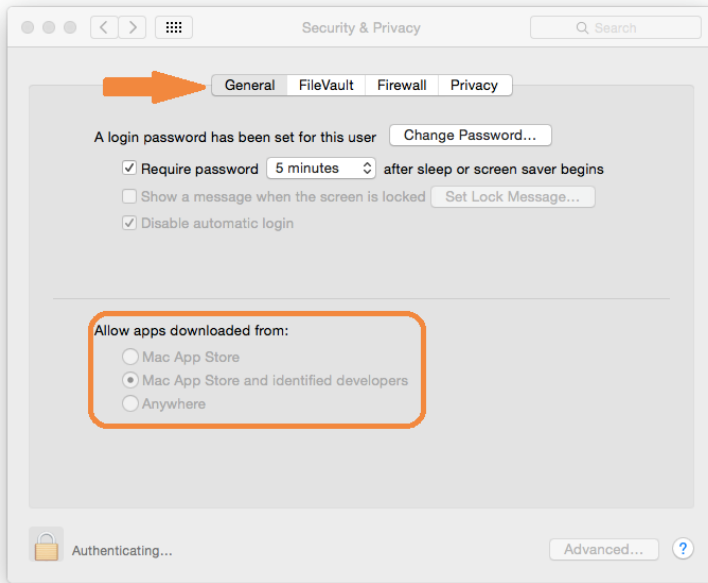
1. Click the Apple menu, and select "System Preferences":



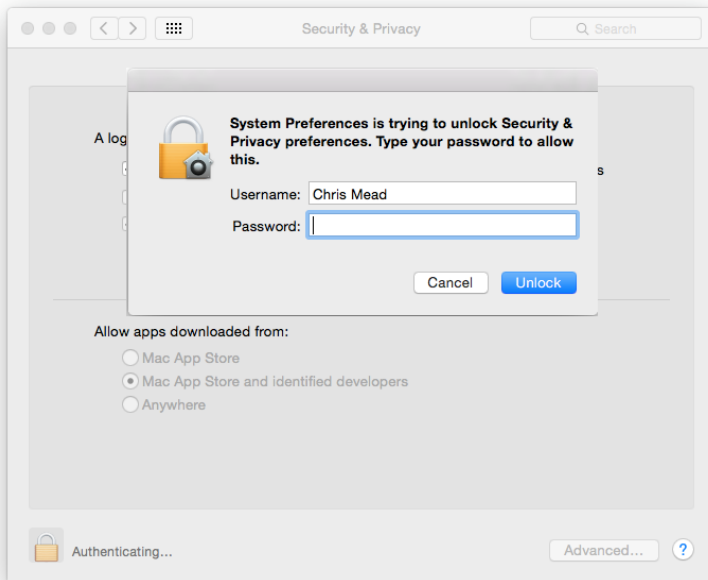
2. In the top row, click on "Security & Privacy":



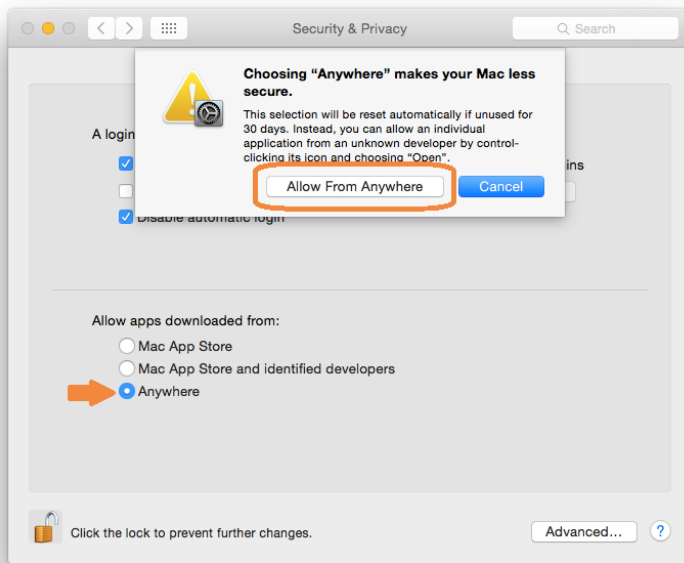
3. Make sure the General button is selected at the top, then look for the section titled "Allow apps downloaded from" (if you do not see this, proceed directly to step 7 below):



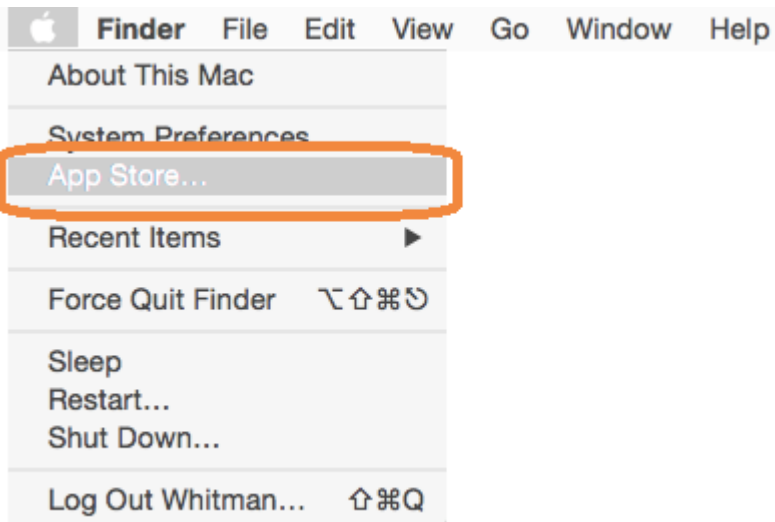
4. Click the lock in the lower left corner to make changes, and enter your Mac password when you're asked for it:



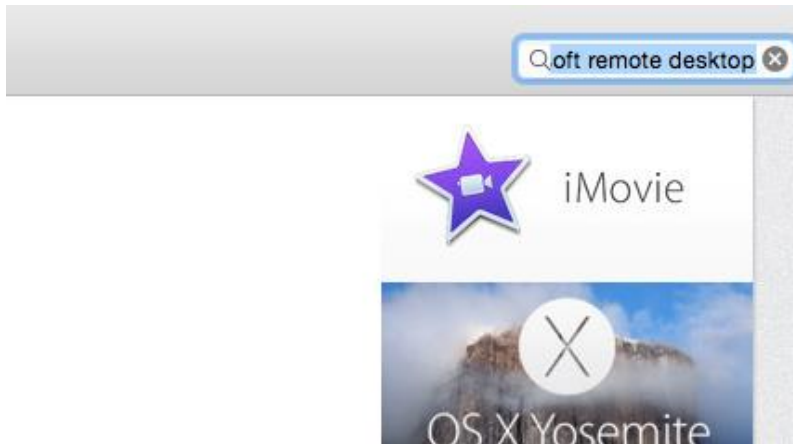
- Under "Allow apps downloaded from:" select "Anywhere" if it isn't already selected. A dialog will pop up warning that "Choosing 'Anywhere' makes your Mac less secure." Click "Allow from anywhere".



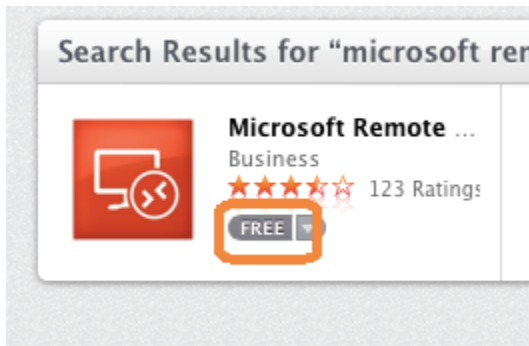
- Close System Preferences.
- Click the Apple menu, and select "App Store":



8. Search for Microsoft Remote Desktop:



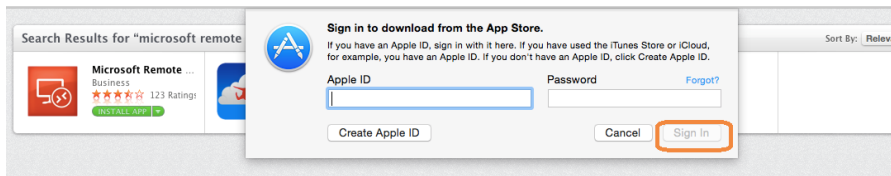
9. Click on "Free":



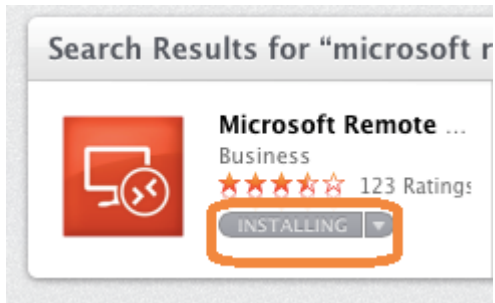
10. Click on "Install App":



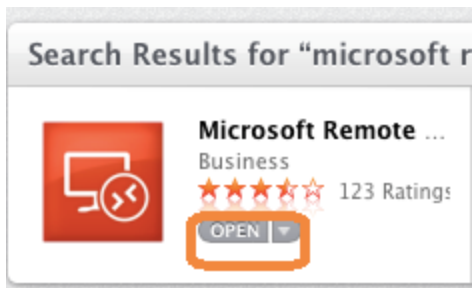
11. If you are asked for your apple ID and password, enter it, and click continue:



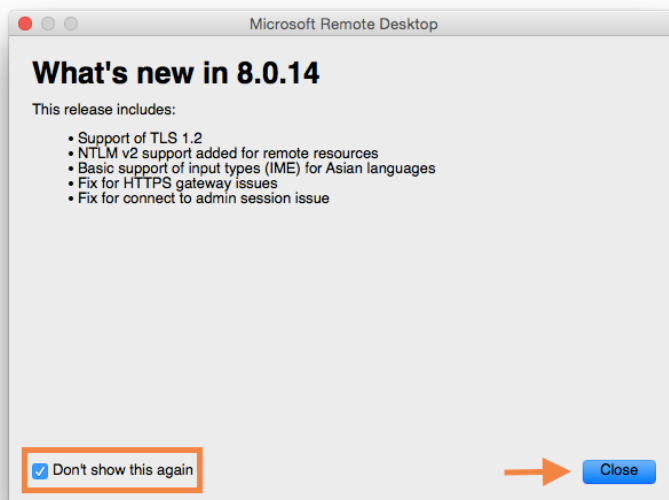
12. You will see "Installing":



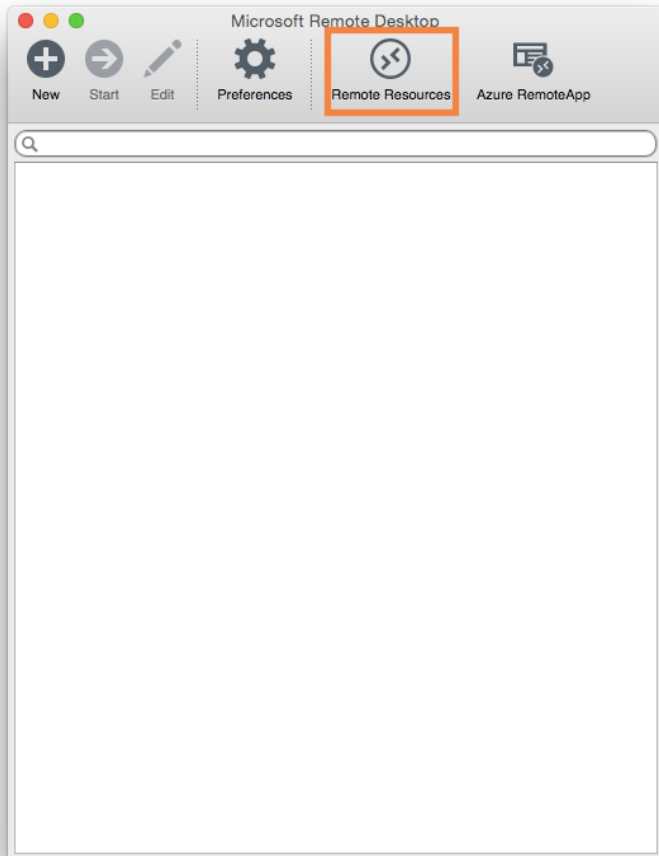
13. When it's installed, click on "Open":



14. Open Microsoft Remote Desktop. The first time you run it you will probably see a dialog similar to the one below. Click "Don't show this again", then click "Close", as shown:



15. You should see the main Microsoft Remote Desktop app window. You won't see anything just yet; we need to configure it. To start, click "Remote Resources", as highlighted below:



16. In the URL Field, type "https://gilead.engr.washington.edu/rdweb/feed/webfeed.aspx", then use your NETID\<netid> and password in the fields below, and click "Refresh":

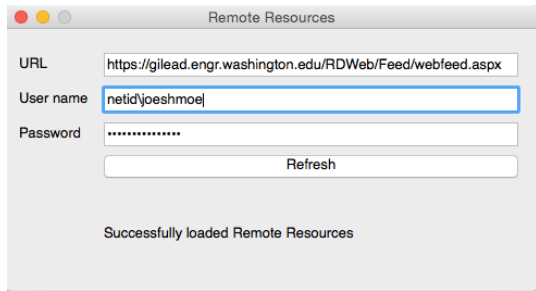
Remote Resources

URL

User name

Password

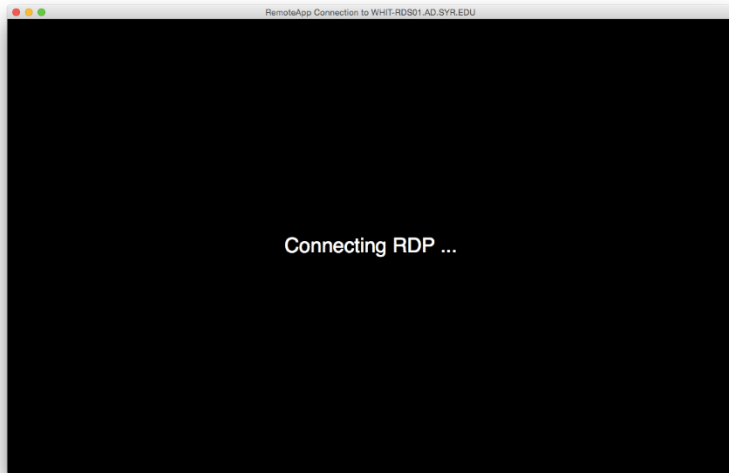
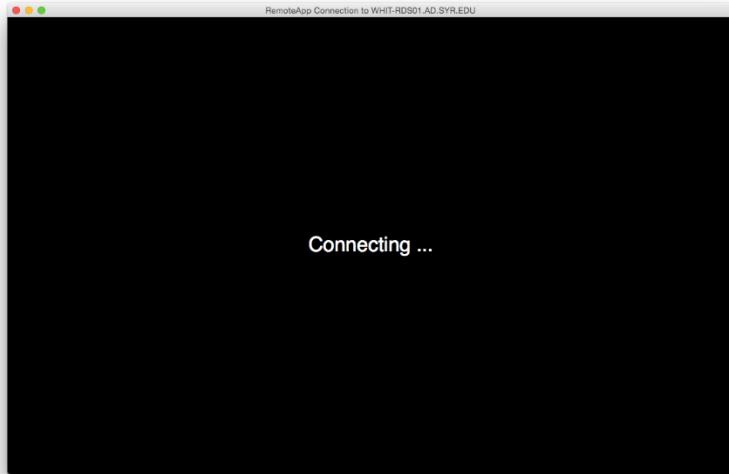
17. You should see a success message similar to the one below:



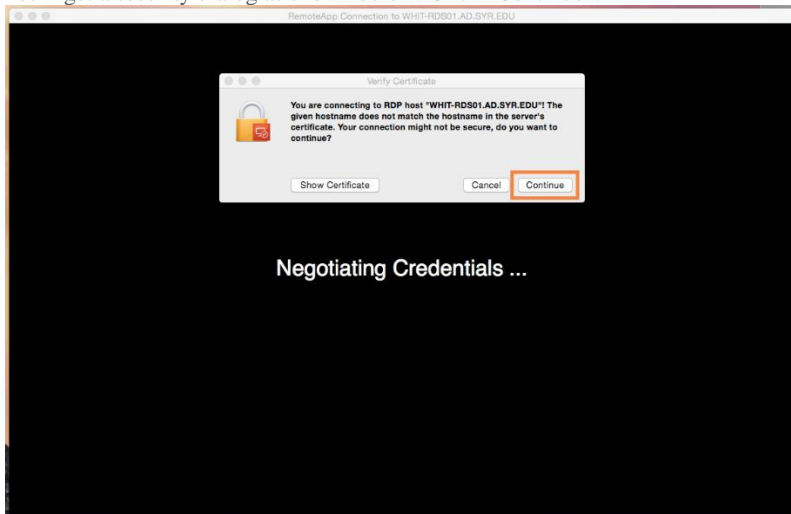
18. Close the Remote Resources pane. You should now see all the resources that you have access to within COE instance of RemoteApp:



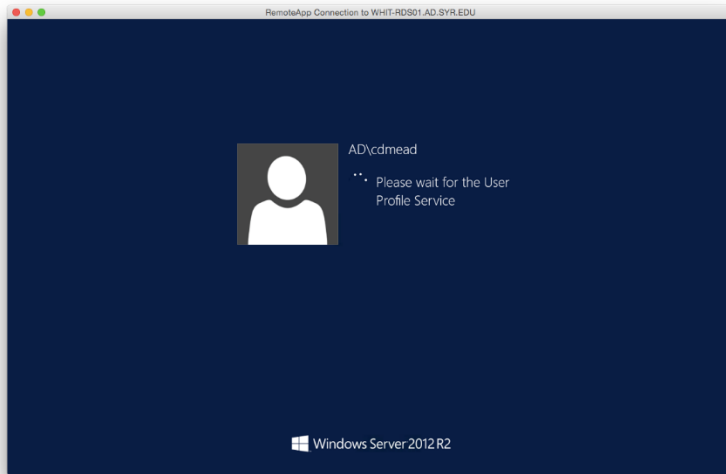
19. Double click on any one of the applications, and you'll see a black window up showing the following dialogs:



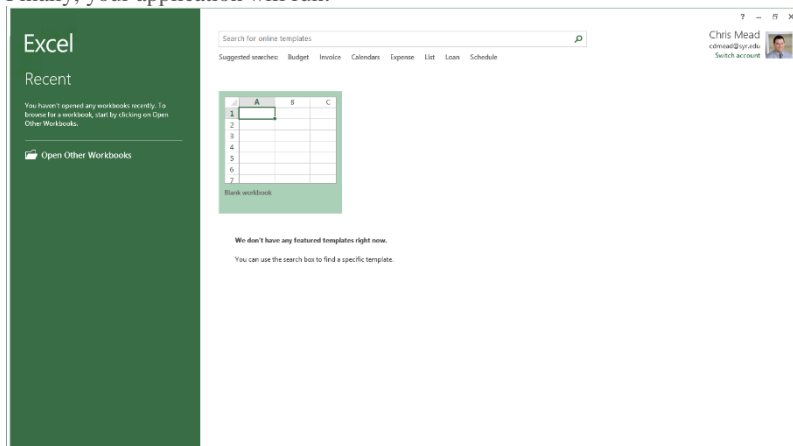
20. You'll get a security dialog as shown below. Click "Continue":



21. You will then see a window similar to a Windows 8.1 login progress screen:



22. Finally, your application will run:



When you're done, simply close your app