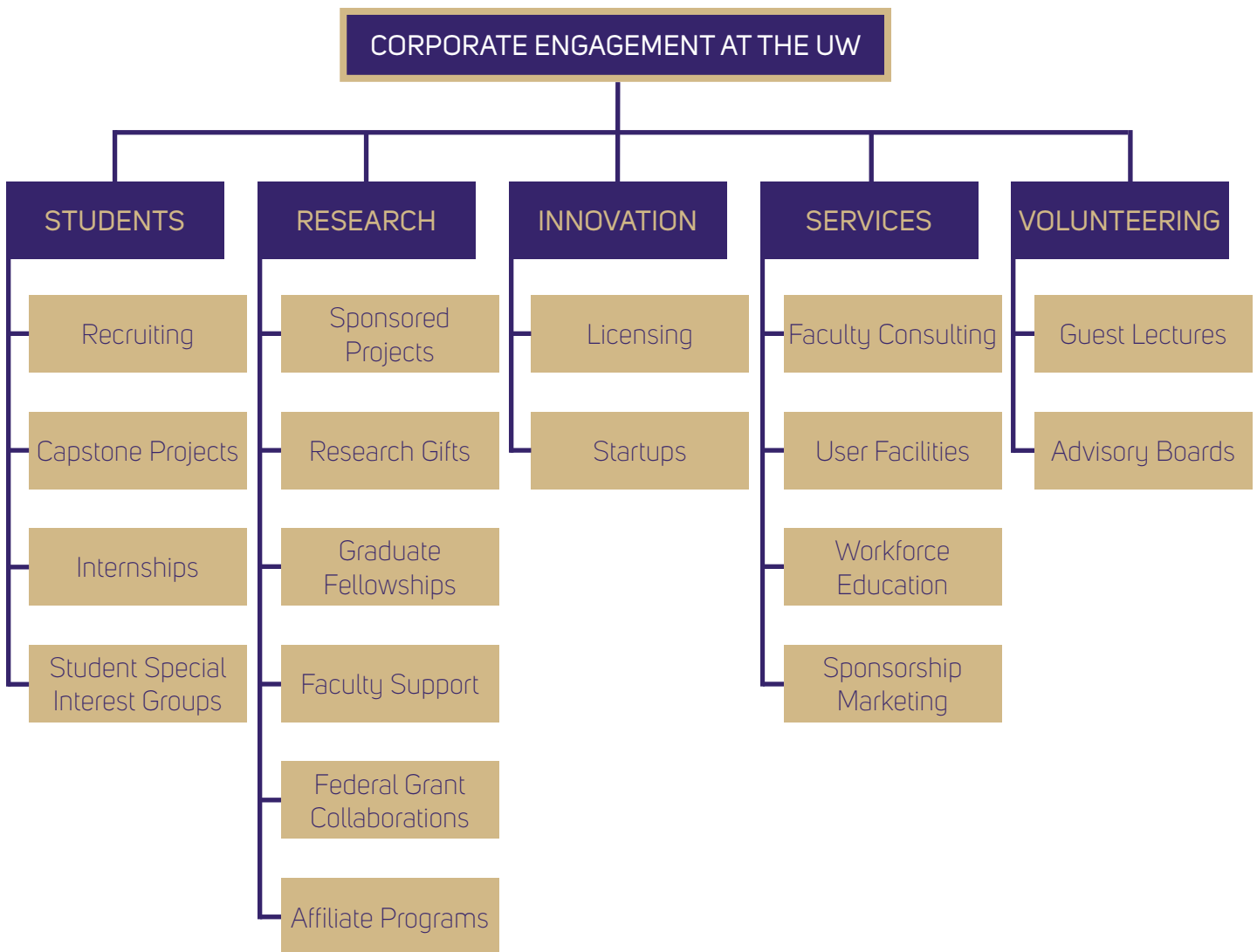


# CORPORATE ENGAGEMENT OPPORTUNITIES



Offering research expertise, licensing opportunities, access to facilities and more, the University of Washington is committed to fostering mutually beneficial relationships with our partners in business and industry.



## PARTNER WITH THE UW

---

Our Corporate Relations team can help your company collaborate with the UW. Our mission is to foster meaningful engagement with businesses by connecting them to UW's student talent, faculty expertise and research resources.

### STUDENTS

Students are the UW's most important resource. Companies can recruit them for full-time positions or internships, or engage with them via capstone projects and student professional organizations.

### RESEARCH

The UW is among the world's premier research institutions. Companies can support faculty and their research through gifts or sponsored projects, participate in affiliate programs and partner with UW researchers on federal grant proposals.

### INNOVATION

The UW is a leader in technology transfer and innovation. Our CoMotion office can help your company with exploring and licensing UW technologies, and connect you with our startups.

### SERVICES

Companies can tap into UW's experts and resources through faculty consulting, professional education and many specialized equipment user facilities. Companies can also promote their brands through sponsorship marketing opportunities.

### VOLUNTEERING

Volunteering is a great way to support the UW! Professionals can contribute their time through guest lectures, advisory board membership, or student group mentorship and interaction.



## CONTACTS

---

### Erin Schwartz

Senior Director, Corporate & Foundation Relations  
College of Engineering  
erinlisa@uw.edu | 206.543.8192

### Sharon Dana

Associate Director, Corporate & Foundation Relations  
College of Engineering  
sdana@uw.edu | 206.543.6908

### Liz Young

Associate Director, Corporate & Foundation Relations  
College of Engineering  
youngl9@uw.edu | 206.685.0167