

# 2017 WiSE Conference

## Session Speaker Biographies

**Plenary Sessions: 10:15 – 11:50 a.m.**

---

### ***Amazon and Customer Obsession***

**Greg Geiger - Moderator**  
**University Programs, Recruiter, Amazon**



Favorite sports fan motto is: "There's always next year!" because being a Cleveland sports fan has been a roller coaster of emotion. Ohio against the world! UW alumni, calling Seattle home now, but I've lived in four different states on both coasts and can honestly say Seattle is one of the best cities in America.

---

### ***Creating Your Career Binder***

**Katrina Jones - Moderator**  
**Engineering Configuration Management - Configuration Status Accounting, Boeing**



Katrina Jones works at Boeing on the P8 Program. She is on the BDS Diversity Council and on the enterprise Boeing-NSBE Committee. She is a graduate from UW with a Master of Industrial and Systems Engineering, and from Central Washington University with a BA in Mathematics and a BS in Computer Science.

---

### ***Diversity, Bioethics and Empowerment in STEM***

**Dianne Hendricks**  
**Lecturer, Department of Bioengineering, University of Washington**



Dr. Dianne Hendricks is a Lecturer where she leads Bioengineering Outreach, the Bioengineering Departmental Honors Program, and the Bioengineering Summer Camp in Global Health. She teaches introductory and honors courses in bioengineering, tissue and protein engineering lab courses, technical writing, and bioengineering ethics.

### **Camille Birch**

**Student, Bioengineering and Computer Science Department, University of Washington**



Camille Birch is an undergraduate senior. She is currently completing a senior capstone project in the Fetz Lab and is developing curriculum for a diversity-focused bioengineering ethics course for her bioengineering departmental honors project.

### **Celina Gunnarsson**

**Student, Biotechnology Department, University of Washington**



Celina Gunnarsson is an undergraduate senior and works on developing brain microvascular models to study malaria-vessel wall interactions. Besides academic research, Celina recently facilitated the Women's Action Commission's production of The Vagina Monologues and is currently creating a diversity-focused bioethics curriculum for the bioengineering department.

---

## ***Navigating Your Career as an Engineer***

### **Eve Riskin - Moderator**

**Professor of Electrical Engineering, University of Washington**



Eve Riskin is Associate Dean of Diversity and Access in the College of Engineering, Professor of Electrical Engineering, and Faculty Director of the ADVANCE Center for Institutional Change. With ADVANCE, she works on mentoring and leadership development programs for women faculty in STEM.

### **Amie Sullivan**

**Associate, KPFF Consulting Engineers**



With a BSCE from the University of Washington and over 17 years of experience as a consulting structural engineer, Amie works with architects and contractors on some of the most exciting buildings projects in the region and is an advocate for gender diversity in engineering. She is an Associate at KPFF Consulting Engineers.

### **Nadja Rhodes**

**Software Engineer, Microsoft**



Nadja graduated from Stanford University with a BS in Computer Science and has spent the last three years working at Microsoft. She is from Maryland and has enjoyed moving to Seattle. She codes, reads and attends live music events. She stays active playing sports in the greater Seattle area.

**Sonja Knoll**  
**Software Engineer, Pinterest**



Sonja is a Software Engineer at Pinterest. She has a BS in Mathematics and a MA Linguistics from McGill University, and a MS in Computer Science and Engineering from UW. Her passion is applying Artificial Intelligence, Machine Learning, and Natural Language Processing to solve real problems. Previously, she worked at Microsoft and Machina Sapiens.

**Jessica J. Tran**  
**Design Researcher, Microsoft**



Jessica graduated from the University of Washington Electrical Engineering department (Ph.D. 14', MS 10', BS 08') with a focus in digital signal processing and HCI. She currently works at Microsoft and previously worked at Thomson Reuters in New York City.

---

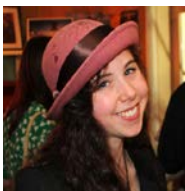
## ***Prototype an App in a Fast Paced Design Workshop***

**Elena Agapie - Moderator**  
**Student, Human Centered Design and Engineering Department, University of Washington**



Elena is a HCDE PhD student. She designs technology to leverage online crowdsourcing for personal health behavior changes. She is building tools for increased physical activity. Elena also worked on research projects at Microsoft Research, JPL/NASA, and Fuji Xerox.

**Kiley Sobel**  
**Student, Human Centered Design and Engineering Department, University of Washington**



Kiley is a HCDE PhD candidate. She is interested in inclusive design and child-computer interaction. For her dissertation research, she studies how interactive technology might help all children with diverse abilities and needs to equally participate in the same setting.

**Catherine Baker**  
**Student, Computer Science and Engineering Department, University of Washington**



Catherine Baker is a 5th year PhD student in CSE. Her advisor is Richard Ladner and her research interests are in human-computer interaction and accessibility. Her research focuses on making computer science more accessible for blind programmers.

## **Kaitlyn Xinhao He**

**Student, Human Centered Design and Engineering Department, University of Washington**



Kaitlyn is a sophomore and intended HCDE major. She wants to specialize in UX Design. Kaitlyn is from Beijing, China and went to high school in San Diego, California.

---

## ***A View from the Top: Succeeding in Small Companies***

### **Reitha Weeks - Moderator**

**Biotech Camp Program Coordinator, Shoreline Community College**



Dr. Weeks received her BS - Oregon State University and PhD – University of Washington (Genetics). She worked 13 years for multiple Seattle biotech companies. She was Science Outreach Program Manager at Northwest Association for Biomedical Research for nine years. She now works with Shoreline Community College as Biotech Camp Program Coordinator and volunteers with HiveBio and Association For Women In Science.

### **Carla Grandori**

**CEO and Co-Founder President, Founder & Scientific Director, SEngine Personalized Medicine Cure First**



Dr. Grandori received an MD from the University of Rome, La Sapienza and PhD in Molecular Biology and Biochemistry from The Rockefeller University, NY. She is a cancer researcher and serial entrepreneur with a mission to identify rational, less-toxic targeted treatments for cancer. Dr. Grandori's team pioneered methods to identify novel drug targets and a personalized oncology platform.

### **Leen Kawas**

**President and CEO, M3 Biotechnology**



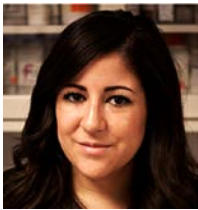
Dr. Kawas has led M3 Biotechnology's growth since 2013 following completion of her PhD in molecular pharmacology and toxicology from Washington State University in 2011. For her leadership and accomplishments, she's won many awards, including EY's Winning Women Entrepreneur and recognition for M3 as one of Seattle's top 10 hottest startups by GeekWire.

**Marjorie Lund, PE, SE**  
**Principal, Lund Opsahl, LLC**



Marjorie is a structural engineer and owns a 19-person firm in Seattle. She graduated from University of California, Berkeley with BSCE. Her early years were with a large firm where she worked her way up from Junior Engineer to Vice President. Marjorie has won local and national awards and has written articles on sustainable construction.

**Kina McAllister**  
**CEO and Founder, StemBox: Subscription Science Kits for Girls**



Kina received a BS in General Science from Seattle University in 2013. She is the founder and CEO of StemBox. She previously worked at Fred Hutch researching gene therapies for HIV. She has a passion for contributing to current fields of scientific research and empowering young girls to explore STEM.

**Veronica Smith**  
**Founder and Data Scientist, data2insight LLC**



Veronica S. Smith leads data2insight, a data science company with an imperative to use data for social good. Prior to founding data2insight, she was a University of Washington research scientist/engineer studying human brain structure and function. Veronica is passionate about mentoring girls and women and serves as Washington State co-chair of the Million Women Mentors movement.

# Workshop Session 1: 1:40 – 2:40 p.m.

---

## ***Have You Googled Yourself Lately? Why Social HR Matters***

**Gail Cornelius - Moderator**

**Director, Engineering Career Center, University of Washington**



Gail Cornelius is the Director for the Career Center @ Engineering at the University of Washington's Seattle campus. Opened in Fall 2015 as a branch of UW's central Career & Internship Center, the Career Center @ Engineering and its staff is focused on providing professional development to ~7,500 students in 10 Engineering departments. Gail came to UW in May 2015, after an 18-year Engineering career at Boeing. She holds her Bachelor's and Master's degrees in Industrial Engineering from Cal Poly & New Mexico State, respectively.

---

## ***Gameplan 101: How to Kickoff Your Career in Tech***

**Rena Culala**

**Information Technology, F5**



Seattle born and raised. I am a University of Washington Husky 2009 graduate earning my BS in Technical Communication (major now known as Human Centered Design and Engineering). I am currently pursuing a career in Information Technology at F5 Networks.

**Sirena Merfalen**

**Lead Engineer, Boeing**



Sirena graduated from the University of Washington in 2013 with her BS in Industrial & Systems Engineering. She currently works as a Lead Engineer at the Boeing Company and pursuing her Master's in Industrial & Systems Engineering from the University of Washington.

**Elise R. Groves**

**Information Technology Director, Department of Athletics, University of Washington**



Elise Groves graduated with a BS in Human Centered Design & Engineering from the University of Washington where she found her passion for technology and her desire to make it approachable and convenient for everyone. She continued to grow that passion upon graduating by working at the Boeing Company where she worked to design and build websites and became involved with creating curriculum for upcoming technical leaders within the company. Never passing down an opportunity



to grow and learn, in 2015 Elise became the University of Washington Athletics IT Director where she is able to support over 20 sports and be a part of countless new technology. Grateful to work at the “greatest setting in college football”, Elise works to ensure that each fan has a good experience when they attend a sporting event at the UW.

**June Summers Hairston, Moderator**  
**Director, PNW LSAMP Program, University of Washington**



Dr. Hairston is a University of Washington alum with a PhD in Education Leadership and Policy Studies. She is presently the UW Director and PNW Alliance Grant Administrator for the Louis Stokes Alliance for Minority Participation program. For 27 years she was an Education Opportunity Program Academic Adviser in the UW Office of Minority Affairs & Diversity. Born in St. Louis, June is married to Bishop Roland E. Hairston, Psy.D. and has six children, two of whom are Husky Alums.

---

## ***Keeping Sane: Work-Life Balance Through Your Career***

**Amanda Gehman - Moderator**  
**Structural Engineer, Coughlin Porter Lundeen**



Amanda is a Seattle native who earned both her Bachelor's and Master's degree in Civil and Environmental Engineering from the University of Washington. She has been involved with WiSE since college. She has been with Coughlin Porter Lundeen for three years now.

**Hezareigh Ryan**  
**Structural Engineer, Coughlin Porter Lundeen**



Hezareigh has a BS in Civil Engineering from UC Berkeley and a MS in Structural Engineering from San Francisco State University. She has been working at Coughlin Porter Lundeen as a structural Engineer for over two years.

**Jessy Hardy**  
**Civil Engineer, Coughlin Porter Lundeen**



Jessy received a BS in Civil and Environmental Engineering from Seattle University. She has been with Coughlin Porter Lundeen for two years. She is passionate about projects that focus on low-impact development and sustainable design.

**Marsha Swatosh**  
**Structural Staff Engineer, Coughlin Porter Lundeen**



Marsha is originally from Minnesota, and graduated from the Universities of Wisconsin and Minnesota with degrees in Physics and Civil Engineering. She then spent two and a half years teaching middle school math in Namibia, South Africa, before moving to Washington for her masters' degree. She now works at Coughlin Porter Lundeen and loves exploring the Pacific Northwest.

**Rachel Vranizan**  
**Structural Staff Engineer, Coughlin Porter Lundeen**



Rachel Vranizan is a Structural Project Engineer with Coughlin Porter Lundeen with three years' experience. She studied civil engineering at Seattle University as an undergraduate and received a master's in Sustainable Design and Construction from Stanford University. She is passionate about sustainability in the built environment and exploring the great outdoors.

**Marie Ternes**  
**Structural Engineer, Coughlin Porter Lundeen**



Marie Ternes is a structural engineer at Coughlin Porter Lundeen in Seattle. She received her BSE and MSE in civil engineering at the University of Michigan. Before moving to Seattle, Marie worked in New York City as a structural engineer at an Architecture/Engineering firm.

---

## ***Started From the Bottom, Now She's Here: How STEM Mentoring Can Change Your Life***

**Janet Phan**  
**Global Technology Program & Product Management, Thriving Elements**



Janet T. Phan is a Global Technology Program manager for PwC. Over the course of her career, Janet has had several key mentors who gave her countless opportunities, feedback, guidance and visibility. Growing up underprivileged, without them, she would not have the opportunity to work where she's had the opportunity to travel and collaborate with people in various countries. However, what Janet has found is that she is *often the only girl at the table*, not only in the U.S. but also across the world. As a beneficiary of exemplary mentoring, Janet organized Thriving Elements

with the goal to replicate the quality mentoring she received and scale it to reach as many underprivileged and under resourced girls as possible. This will help them go beyond their potential by providing guidance, instilling confidence, and establishing independence in STEM (Science, Technology, Mathematics, & Engineering).



---

## ***Transfer Students and the Search for Scholarships: UW, Local, and National Scholarships for the future Husky***

**Robin Chang - Moderator**

**Office of Merit Scholarships, Fellowships & Awards, University of Washington**



Robin Chang is the Director of University of Washington's Office of Merit Scholarships, Fellowships & Awards and has been advising undergraduate students regarding merit-based scholarships for over eight years.

---

## ***Where are the people like me? Examining the Factors that Impact Cracking the Ceiling***

**Mayoore Jaiswal - Moderator**

**Student, Electrical Engineering Department, University of Washington**



Mayoore Jaiswal is a fourth year PhD student in Electrical Engineering. She has interned in multiple wireless corporations. Recently Mayoore was a research intern at Intellectual Ventures Laboratory where she developed a tool to diagnose Malaria. She is a PEERs Leader and an advocate for increasing women and under-represented minority participation in STEM fields.

**Katherine Schultz**

**Student, Chemical Engineering Department, University of Washington**



Katie is a senior. She transferred to the UW from Seattle Central College. In addition to being a PEERs leader, she is the president of Women in Chemical Engineering. She has helped organize numerous events and workshops aimed at advocating for women in engineering and plans to continue to do so after she graduates.

**Lily Berger**

**Student, Materials Science and Engineering Department, University of Washington**



Lily is a third year PhD student and a PEERs leader. She received her Bachelor's Degree in Mechanical Engineering from MIT and then worked at a medical device company before coming to the UW for graduate school. She is also interested in workers' rights and is a Steward in Local 4121, the UW student labor union.

## Workshop Session 2: 2:50 – 3:50 p.m.

---

### ***Crush Your Coding with Facebook – Learn Tips and Tricks on How to Succeed in Your Technical Interview***

**Bill Haughney - Moderator**

**University Recruiting, Facebook**



Bill is the new Facebook Software Engineering recruiter for the University of Washington. He has worked with Facebook for 18 months, and previously for Deloitte's Federal Consulting Practice in Washington, DC. Bill and his wife just had a new baby, and he is a little sleep deprived.

**Cameron Pickett**

**Mobile Engineer, Facebook**



Cameron Pickett is a mobile engineer on Messenger's Real Time Communication team, the team responsible for Messenger VoIP and recently group video calling. Cameron tech leads Real Time Communication's mobile client platform, working across both android and iOS clients. He graduated from University Washington in 2014 with a BS in Computer Engineering.

**Patricia McKenzie**

**Software Engineer, Facebook**



Patricia has been a software engineer at Facebook for two years. Currently, she is on the Care Machine Learning team focusing on abuse detection on Facebook and Instagram. Before working full time at Facebook, she interned in their Seattle office and went to the University of Washington where she majored in Applied and Computational Mathematical Sciences, Discrete Math and Algorithms.

---

### ***Funding your Future: Local and National Scholarships for Undergraduates in STEM Field***

**Robin Chang - Moderator**

**Office of Merit Scholarships, Fellowships & Awards, University of Washington**



Robin Chang is the Director of University of Washington's Office of Merit Scholarships, Fellowships & Awards and has been advising undergraduate students regarding merit-based scholarships for over eight years.

---

# ***Internships Can Break the Ceiling and We'll Show You How to Get Them***

**Brenda Larson - Moderator**

**Lead Graduate Advisor, Electrical Engineering Department, University of Washington**



Brenda is the Lead Graduate Advisor in the University of Washington Department of Electrical Engineering and has worked in higher education as adjunct faculty in Communication Studies. She has been an academic advisor for over 18 years.

**Mayoore Jaiswal**

**Student, Electrical Engineering Department, University of Washington**



Mayoore Jaiswal is a fourth year PhD student in Electrical Engineering who has interned in multiple wireless corporations, and at Intellectual Ventures Laboratory where she developed a tool to diagnose Malaria.

**Amanda Loh**

**Student, Electrical Engineering Department, University of Washington**



Amanda formerly in professional ballet, is now a senior studying Electrical Engineering and Computer Science. Recently a software intern at Ekso Bionics, she worked on foot sensors for exoskeletons to enable paraplegics to walk.

**Emi Harada**

**Student, Electrical Engineering Department, University of Washington**



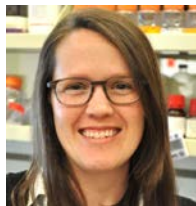
A junior in Electrical Engineering, with concentration in Controls and a little bit of Communications. Completed a six month internship with Verizon Wireless in RF system performance.

---

# ***Overcome Gender Bias: Mentoring and Other Strategies for Career Development***

**Mary Young - Moderator**

**Staff scientist, Center for Infectious Disease Research, Seattle Association for Women in Science**



Dr. Mary Young has a Ph.D. in immunology from the University of Colorado and is a postdoctoral scientist at the Center for Infectious Disease Research, where she applies systems biology to understand how T cells interpret signals. She is the co-chair for Programs in the Seattle Associated Women In Science.

**Lauren Ryan**

**Senior Mechanical Engineer in the Medical Devices Group, Microsoft Research**



Lauren Ryan is a Senior Mechanical Engineer in the Medical Devices Group at Microsoft Research. Lauren's mentors, mentees, and her position on the leadership team of the Purdue Women in Engineering mentoring program during her university years are the reasons why she encourages others to also build a supportive mentoring network.

**Crystal Humphries**

**Data Scientist, Amazon**



Dr. Crystal Humphries is a data scientist with a PhD in human genomics from the University of Miami. She was a postdoctoral fellow at the Institute for Systems Biology and is currently a data scientist for Amazon, working in their Ads Platform Team.

**Sheila Lukehart**

**Associate Dean, Research and Graduate Education, School of Medicine, University of Washington**



Dr. Sheila Lukehart received her PhD in Microbiology and Immunology from University of California, Los Angeles. She was a postdoctoral fellow at University of California, San Diego before joining the faculty at the University of Washington as a Professor of Medicine and Global Health.

**Beverly Torok-Storb****Clinical Research Division, Fred Hutchinson Cancer Research Center, Seattle**

Dr. Beverly Torok-Storb has a PhD from the University of Pittsburgh and is a member of the Clinical Research division at the Fred Hutch. She is a part of the Hutch United Mentoring network for students and postdocs and established an internship program for high school students interested in science.

---

## ***Peering into the Crystal Ball: Preparing for New Directions in Science***

**Reitha Weeks - Moderator****Biotech Camp Program Coordinator, Shoreline Community College**

Dr. Weeks received her BS - Oregon State University and PhD – University of Washington (Genetics). She worked 13 years for multiple Seattle biotech companies. She was Science Outreach Program Manager at NWABR for nine years. She now works with Shoreline Community College as Biotech Camp Program Coordinator and volunteers with HiveBio and AWIS.

**Angela Churchill****Postdoctoral Fellow, Department of Medicine, Division of Nephrology, University of Washington**

Dr. Churchill is a postdoctoral fellow in the lab of Dr. Benjamin Freedman. She received her BS in Animal Science from Cornell University in 2011, and received her PhD in Genetics and Development from Columbia University Medical Center in 2016. Dr. Churchill studies polycystic kidney disease using stem cell-derived kidney organoids and microphysiological kidney devices or "kidney-on-a-chip".

**Lilian de Greef****Student, Computer Science & Engineering Department, University of Washington**

Lilian is a Computer Science PhD student advised by Shwetak Patel in the Ubiquitous Computing Lab. Her research currently focuses on lowering the access barrier to medical care, using low cost commodity hardware. She received her BS from Harvey Mudd College in 2012.

**Ece Kamar**  
**Researcher, Microsoft Research, Redmond**



Dr. Kamar is a researcher at Microsoft Research Redmond working on artificial intelligence. She received a PhD from Harvard University in 2010. Her work covers several subfields of AI; including machine learning, decision-making and human-computer collaboration. She is passionate about developing AI systems that can improve the way we live.

**Katie Pollock**  
**Scientist, Tech R&D, Juno Therapeutics**



Dr. Pollock is a cryobiology scientist at Juno Therapeutics, where she is working to optimize t-cell freezing and thawing. Katie graduated with degrees in Biomedical Engineering from the University of Wisconsin-Madison (BS) in 2011 and from the University of Minnesota-Twin Cities (PhD) in 2016.

---

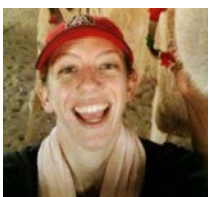
***"Tell me about yourself" Get to know your strengths and how to articulate them***

**Lindi Mujugira - Moderator**  
**Program Manager, Center for Career Connections, Bellevue College**



Dr. Lindi Mujugira, PhD is a Program Manager at the Career Center and a faculty member in Mathematics at Bellevue College, Bellevue WA. She assists with the National Science Foundation-initiated STEM to Stern program. Her engineering background gives her a passion for this initiative as she helps students reach their full potential.

**Christina Sciabarra**  
**Associate Director, Center for Career Connections, Bellevue College**



Christina Sciabarra is the Associate Director of the Career Center and a faculty member in Political Science at Bellevue College, Bellevue WA. Her role includes leading the Women's Center where she works with women in transition and community members. She runs the National Science Foundation-initiated STEM to Stern program.